


The River Yealm Harbour Guide 2024

Facilities and local services, including map and tide tables

A photograph of a man and a woman on the deck of a sailboat, looking out at the ocean during a golden sunset. The man is standing and holding a rope, while the woman is sitting. The sun is low on the horizon, creating a warm, orange glow over the water and the boat's deck. The background shows distant hills or mountains under a clear sky.

That moment when you find
the agent that makes it all
smooth sailing.

Marchand Petit
ESTATE AGENTS

SOUTH HAMPS' LEADING ESTATE AGENT



DARTMOUTH
01803 839190

KINGSBRIDGE
01548 857588

MODBURY
01548 831163

NEWTON FERRERS
01752 873311

SALCOMBE
01548 844473

TOTNES
01803 847979

**PRIME WATERFRONT
& COUNTRY HOUSE**
01548 857588

marchandpetit.co.uk

Welcome to the River Yealm, a tranquil, unspoilt, and an important area in terms of conservation. It is also a bass nursery, Special Area of Conservation (SAC), and a Site of Special Scientific Interest (SSSI) and as such harbours many protected species. Much of the coastline and surrounding land is owned by the National Trust.

This provides an environment that is rich in biodiversity and is a quiet haven where you can get away from it all. There is something for everyone in and around the harbour area. Children and adults alike can enjoy the natural beauty and beaches that are near at hand. From exploring the many walks to making sandcastles on the sand bar when it is exposed to crabbing and searching the rock pools to enjoying some great food; good beer and wine to delicacies and gifts from the shops in Newton Ferrers.

The two villages of Newton Ferrers and Noss Mayo house much of the local community and keep careful watch on each other from opposite sides of Newton Creek. Each village has a selection of places to eat and drink and a church, though only Newton Ferrers has shops, post office and a thriving Yacht Club.

The Harbour Office is situated towards the end of Yealm Road, at the bottom of Yealm Steps in Newton Ferrers. The shower and waste disposal facilities can be found here.

I, or one of my assistants, will be on the water in the harbour launch from approximately 0800 to 0930, and afternoon/evening from approximately 1300 to late evening every day from the 28th March to 31st October (weekends and public holidays included). We will be happy to answer any questions. During the Summer Season a considerable amount of time is spent working afloat or away from the office, so if you wish to contact me or a member of my staff outside normal office hours, it is advisable to telephone first.

Jez Spring – Harbour Master

CCTV Coverage

Please note that the harbour has extensive pan/tilt/zoom CCTV along with fixed CCTV coverage which is recorded.



HARBOUR GUIDE CONTENTS

Harbour Information.....	2
Harbour Dues	4
Estuary Walks	6
Harbour Map.....	8
The Return of Bluefin Tuna	10
Yealm Seagrass.....	11
Tide Tables.....	12
Useful Phone Numbers	16
Local Bus Timetable	16

Harbour Office

Harbour Office, Yealm Steps, Yealm Road, Newton Ferrers, PLYMOUTH PL8 1BN

Office Opening Times

28th March to 31st October

Mon to Fri – 0900 to 1200 (may vary)

Weekends and Public Holidays – 0900 to 1000 (may vary)

During office hours the Harbour Master or office manager can usually be contacted on the telephone number below

Telephone 01752 872533

Email office@yealmharbourauthority.co.uk

Web www.yealmharbourauthority.co.uk

In case of emergency: In life threatening situations call 999 or contact the Coastguard. In other situations call the Harbour Office and follow the instructions

Disclaimer: Whilst every effort is made to ensure that the information in this guide is accurate, publisher or their agents cannot accept any liability for loss or damage caused by errors in the information given. No part of this publication may be reproduced without written permission of the Harbour Master. ©RYHA 2024

Acknowledgements:

Cover image Joe Woodyear

Layout and design Clive Woodyear

Printed by PDS Print, Plymouth

Wild swimming, Paddleboarding, Canoeing and Kayaks

These activities are becoming more popular so please take precautions to ensure that you are visible and safe.

- Never swim or paddle alone
- Wear a wetsuit to reduce the possibility of suffering from hypothermia
- Take plenty of warm clothes and a hot drink for afterwards
- Tell someone where you are going and when you will return
- Wear a swimming safety buoy or personal flotation device
- Swimming to and from, or diving from, the Yealm Steps pontoon is not allowed
- Keep within 10m of the shore and be visible
- If you need to cross the Fairway don't dawdle and go straight across
- Keep a good look out for other water users, especially near the visitor buoys and pontoons
- Check the weather and tides, you can be swept out to sea on a strong ebb tide or offshore wind
- Make sure you have a spare paddle
- Ask at the Harbour Office if you are unsure about anything
- Stay connected to your board, canoe, or swim float

Harbour Navigation

Entering the Harbour is straightforward at most states of the tide and in most weather conditions so long as you observe the navigation aids.

Charts: AC 30, 1613, SC5602, Imray C6, C14 and Imray 2400.6; OS Map 201

Tides: HW Dover -0520. Range MHWS 5.4m – MHWN 4.3m; MLWN 2.1m – MLWS 0.7m

Hazards

- Western and Eastern Ebb rocks, not marked
- Mouthstone Ledge, from the east, not marked
- Inner and Outer Slimers, from the west, not marked
- Sand bar extends south from northern shore of entrance, lit with two port hand marks
- Spit, extends south from the northern shore within the harbour, unlit port hand mark

Harbour Entrance

The Harbour entrance lies between Mouthstone Ledge and Season Point. The mouth of the river is shallow, 0.9m within Cellar Bay at spring tides and a drying sand bar extends southwards from Season Point on the north shore across the entrance.

Wembury Bay and the entrance can be rough when there is a strong ebb tide and strong westerly winds or a swell. It may be desirable for arrival times to take these conditions into consideration. The clearance bearing on St Werburgs Church should be observed to avoid the

Western Ebb rocks.

The east/west leading line, white triangles with vertical black stripe above Cellar Beach, are set to clear the rocky Mouthstone Ledge by a safe distance. Once past Mouthstone Ledge observe the need to pass the bar buoys to port as the leading line passes over the tip of the sand bar which starts to dry at 0.6m LAT.

Vessels should pass south of and close to the first Port Hand buoy (Fl R 5s) and then proceed to the second Port Hand buoy (Fl R 3s). This will take you clear of the tip of the sand bar.

Once past the second Port Hand buoy line up the second leading line on Wembury hillside, white squares with red vertical stripe. In Cellar Bay the bottom is generally level hard sand with no distinct channel and there may be as little as 0.9m on Spring Tides.

Continue to follow the leading line until the moorings open up and then turn into the river at Misery Point. From Misery Point the channel deepens to over 2.5m.

Proceed through the middle of the moorings and be sure to locate the Spit Port Hand buoy and leave to port as the Spit dries to 1.4m.

After the first visitor's pontoon and as you approach the Yealm Steps pontoon make sure to locate the Office Starboard Hand buoy.

Tidal Stream

There may be up to 2 knots of tidal current at times. Skippers should make allowance for this when attempting to turn in congested areas or when coming along side. The tidal flow at the main visitor's pontoon does not run parallel to it with the flow, at both Flood and Ebb, pushing boats onto the channel side of the pontoon. This can make the approach to the pontoon difficult to judge, especially at peak spring tide. This is where most collisions in the harbour occur.

Speed Limit – 6 Knots maximum

The maximum speed within the harbour is 6 Knots, however some boats create a lot of wash at these and lower speeds and they should slow down to minimise the wash, especially when passing through the moorings.

Visitor's Moorings and Pontoons

Most moorings in the river are private and licensed to individual residents. As part of the licence agreement when resident's boats are away, and there is no tender on the mooring or a note saying they are returning that night, they can be used by visitors, but at their risk. Staying overnight on a resident mooring should be cleared with the Harbour Master first. Visiting vessels may not berth alongside resident vessels or other visiting boats without the agreement of the Harbour Master and the owner.

There are two pontoons where visitors can stay.

The main pontoon is in the Pool area of the Harbour on the Starboard side as you travel upstream; please check the suitability of using this pontoon with the Harbour Master if your boat draws more than 2.0m. The second is located further upstream on the port side; please check the suitability of using this pontoon with the Harbour Master if your boat draws more than 1.5m. Both pontoons can take up to three abreast on both sides.

Please ensure, if possible, that larger craft are berthed inboard and smaller vessels do not occupy more space than is necessary. Vessels with bowsprits should either run them in or berth in such a manner to avoid fouling other craft.

Public Moorings

There are six public moorings for use by visitors.

Public Mooring (PM) 1; is available for craft over 45' and up to 60' LOD with a maximum displacement of 25 Tonnes. As this is the only mooring available for craft of this size it is advisable for Skippers of vessels wishing to visit the river to contact the Harbour Office prior to arrival to ascertain availability.

PM 2 to 4; are for vessels up to 40' LOD. They are located on the starboard side when travelling upstream and are on the south side of the channel opposite the Spit buoy. Each mooring has information on it as to what size of vessels are permitted on it. Each can take up to three boats so long as the combined displacement does not exceed 25 tonnes.

PM 5 and 6; are for visitors staying in the village who wish to bring a boat with them for their use whilst on holiday. Each can take up to three boats with a maximum length of 20'. If you wish to make use of this facility, please contact the Harbour Office to ascertain availability of a space on the mooring.

Craft larger than 17m (56 ft) or draft of greater than 2.2m should seek guidance from Harbour Staff as to the suitability of berths and moorings prior to arrival.

Anchorage

Cellar Bay is a wonderful playground in the right conditions. It is a very popular anchorage which is free of charge. Boats anchoring in Cellar Bay should do so in a manner to not obstruct the fairway designated by the leading marker boards. The bottom is predominantly sand with no distinct channel or rocks. Part of the bay is a designated eel grass area where anchoring should be avoided whenever possible. Please see the RYA web site for information about anchoring in Eel Grass areas and how to do so responsibly.

Anchoring is not permitted anywhere in the river East and North of Misery Point

Kitley Estate

If you proceed upstream through the River Yealm

Harbour Authority moorings you will eventually come to the Kitley Estate moorings. These are owned and administered by the Kitley Estate and there are no dedicated visitor moorings.

The rules that apply to RYHA mooring holders do not apply to these moorings. However, some of the mooring holders have given permission for their moorings to be used by visitors, under certain terms and conditions, when they are not using them. These can be identified by a wrapper on the pickup buoy indicating they can be used by visitors.

If you would like to stay in this part of the river, please contact the Harbour Office first for details of the terms and conditions and availability of moorings.

Long Term Mooring / Winter Berthing

Long Term visitor mooring during the summer months may be possible. The river is also sheltered enough to provide good winter berthing afloat from the beginning of November to the end of March. Please contact the Harbour Office for more details.

Public Landings

Much of the land adjoining the river is private property. The following landing points are available to visitors.

Yealm Steps Pontoon This is located part way between the two pontoons and can be accessed at all states of the tide. The Harbour Office, showers and waste facilities and water are to be found here. Tenders may be left secured to the pontoon or on the beach on either side of the pontoon. The end of the pontoon must be kept clear at all times to allow vessels temporary berthing (up to 20 minutes) to embark stores, water or passengers.

Wide Slip Ramp and steps at Baring Point on the south side of the entrance to Newton Creek. The beach is smooth down to the low water mark but facilities for securing tenders are limited. Please ensure your tender is secured so that it does not impede the ability of the ferry to land passengers.

Parish (Kilpatrick) Steps On the east shore opposite the first visitor's pontoon but facilities for securing tenders are limited.

Warren Point On the west shore opposite the first visitor's pontoon. Please ensure your tender is secured so that it does not impede the ability of the ferry to land passengers.

Landing in Newton Creek

Within about 2 hours of high-water landings can be made in Newton Creek at:

The Brook a hard beach and slip at Newton Ferrers, opposite Noss Mayo.

Noss Creek; at Pope's Quay, just below the Swan Inn or at the Ship Inn.

Yealm Yacht Club; there is a concrete slip and jetty.

Bridgend Quay; There are beaches at each end of the quay area and steps on the western face of the quay.

Fishing From the 1st April to the 30th September fishing from the Yealm Steps pontoon is only allowed between sunset and sunrise.

Bass The River Yealm is a bass nursery. Refer to – www.devonandsevernifca.gov.uk/Enforcement-Legislation/Bass-Compliance-Direction or the sign at the bottom of Yealm Steps for information. Be aware of the dates when the bass nursery is active. When active, you must not target bass if fishing from a vessel. When active and when using a vessel, you must not use sand eel as bait regardless of species targeted. The minimum size for retained bass is 42cm.

Ferry Service/Water Taxi A local boatman offers an independent and limited water taxi service between 1st April and 30th September. The boatman also maintains the continuity of the South Devon Coast Path by running a triangular ferry service between Wembury Point, Yealm Steps and Wide Slip. Ferry operating times are daily 1000 – 1600 although the service may be restricted to 1000 – 1200 1400 – 1600 on weekdays and outside school holidays or during bad weather. Evening service by prior arrangement. Contact 07817 132757.

An Electric Ferry Service will also operate from 0800-1000 and 1600 to late. Please contact the ferryman on Channel 69 or 07399067942 for more information.

Fuel/Gas There is no fuel or gas available in Newton Ferrers or Noss Mayo. The nearest fuel station, which also sells gas, is in Yealmpton which is about 4 miles away. The nearest alongside berth for fuel is in Plymouth.

Waste Disposal There are waste bins provided at the Harbour Office for use by visiting yachtsmen. Currently we can only accept glass for recycling, so we ask visiting sailors to retain other recyclables for disposal at points where this facility is available.

Showers and Toilets There are two shower rooms situated at the Harbour Office for visiting yachtsmen. They are open 24 hours a day and offer shower and toilet facilities. They are accessed with an entry code

which can be obtained when you pay your visitor dues and then a pound coin is used to provide electricity for about 3 minutes of use.

Water There is a tap on the Yealm Steps pontoon that vessels may use to fill their water tank. Minimum depth of 1.5m LAT. To comply with local Byelaws this is fed from a break- pressure tank and therefore cannot be deemed as potable water. Water direct from the mains can be obtained from a tap at the bottom of the steps but this is only suitable for small containers.

Maintenance Should you need to carry out maintenance on your boat whilst you are staying in the river please contact the Harbour Office for advice. There are options available for alongside drying berths depending on what work is needed. There is no lift-out facility in the river. Power and water are available at Bridgend Quay which is at the head of Newton Creek. Power is provided via a prepaid meter facility and cards can be obtained from the Harbour Office.

Temporary Alongside Berthing Visitors wishing to embark stores or pick up crew can do so from Yealm Steps pontoon where you can stay for up to 20 minutes.

Lifejacket Lockers These are available for use and are free of charge. The 12 lockers are located at the Harbour Office. You will need £1 to use the locker which is refunded when you return the key and open the locker.

Cashpoint The nearest cash point is located at the Co-Op Local supermarket, 1 Newton Hill, Newton Ferrers. 01752 872234. You can also draw out cash from most banks at Newton Ferrers Post Office, Newton Hill. 01752 872285

Harbour Dues

Vessels staying overnight or using the alongside facilities will be charged Harbour Dues. The current schedule of rates is available from the harbour office and on the RYHA website. Payment can be made at the Harbour Office where we will accept cash or cards.

The Harbour Staff patrol the river every morning between approximately 0800 and 0930 and afternoon/evening from approximately 1300 to late evening depending on weather and the number of visitors in the river. The patrols are made from the 28th March to 31st October and Harbour Dues can be paid to Harbour Staff on the water. If you don't want an early morning visit, then it is advisable to ensure you pay your dues the afternoon before.



Harbour launch

OPEN
SEVEN DAYS
A WEEK



SO VISIT TODAY
AND DISCOVER
A FRIENDLY WAY
TO STOCK UP

VISIT OUR COMMUNITY STORES, POST OFFICE & COFFEE SHOP IN NEWTON FERRERS

FRESH FRUIT & VEGETABLES • FROZEN FISH • LOCAL BEERS & CIDERS, QUALITY WINES & SPIRITS • DELICIOUS DANISH PASTRIES & FRESH BREAD • UNUSUAL CHEESES & QUALITY PÂTÉ • LUXURY BISCUITS, PREMIUM SNACKS & OTHER PICNIC TREATS • LUXURIOUS SALCOMBE DAIRY ICE CREAM AND SORBETS

PLUS WE'RE THE ONLY LOCAL STORE STOCKING DAILY NEWSPAPERS
• A WIDE RANGE OF STATIONERY & GIFT CARDS • AND FREE WI-FI



OPENING HOURS

Shop: Mon–Fri 8:30am to 5:30pm | Sat 8:30am to 1:00pm | Sun 9:00am to 1:00pm

Post Office Counter: Mon–Fri 9:00am to 5:30pm | Sat 8:30am to 1:00pm

TEL. 01752 872 285 | NEWTON HILL, NEWTON FERRERS, PLYMOUTH, DEVON, PL8 1AA

Local walks

There are many walks that visiting yachtsmen can do starting from the harbour area. A few of them are described below – but a copy of the OS Explorer map OL20, or if you prefer the Landranger series, 201 and 202, would prove useful.

Yealm Steps to Newton Ferrers (Circular route). Distance 2.5km, time approximately 40 minutes. *Not a direct route to the shops and pubs but one that offers more varied views of the Pool and Newton Creek.* Land at Yealm Steps. Turn left at the top of the steps and walk along to the bus turning bay. Follow the footpath up to the right passing behind the old Yealm Hotel, turn right at its junction with Lower Court Road. Continue climbing, turn right into Court Road, and follow it down to the church of Holy Cross (1km) which is well worth stopping at and exploring. Leave the churchyard on the lower side turn right into Yealm Road. Follow the road around to the right to the top of Newton Hill, which is where the shops can be found. Co-op at the top, halfway down is the post office and butcher and at the bottom is the pharmacy and the Dolphin Inn. The Yealm Yacht Club is a bit further along Riverside Road East. You can also visit Noss Mayo via the Voss (causeway) if time and tide allow. Return to Yealm Steps by following Riverside Road West to Kiln Quay and then the footpath which brings you onto Yealm Road where you turn left and follow the road downhill to the Yealm Steps.

The Headland walk. Distance 7km. Time 2 hours. *A circular route with magnificent views across Wembury Bay and the entrance to the Yealm.* Land at Kilpatrick steps or Wide Slip, adjacent to the visitor's pontoon in the Pool. Turn right at the top and take the lower path past Ferry Cottage (note the toll board) and follow the path through Passage Wood. The path climbs and joins a track where you turn right. Continue to climb and pass Battery Cottage and then around Cellar Bay at high level. Continue past the Coastguard cottages and through Brakehill Plantation (bluebells and rhododendron) to Mouthstone Point. Carry on around the headland past Gara Point and then on to Warren Cottage. After a further 600m keep left



The Headland walk

up the track to the National Trust car park. At the road turn left and after 50m turn right to descend through Hannaford and on to Noss Mayo. Return to Wide Slip or Kilpatrick steps via the National Trust path through Fordhill Plantation and Ferry Wood as an alternative to the road.

Yealm Steps to Shallowford (Shortaflete) Creek. Distance 3.3km. Time 1 hour.

Birds, flowers and trees. A pleasant afternoon/early evening stroll through woodland offering views of the Kitley Reach.

Turn left at the top of the Yealm Steps. And follow the road and private track for approximately 500m before entering Newton Woods. The path leads to Shallowford Creek. At the head of the creek continue to walk up the valley and return to the entrance of Newton Woods along the high-level path with a zigzag descent. Retrace your steps to Yealm Steps.

Warren Point to Wembury. Distance 5.6km. Time 1hr 30 minutes.

Excellent views of the Pool, the mouth of the river and Wembury Bay. An opportunity to visit Wembury which also offers local amenities.

Land at Warren Point. Keep left at the top of the steps and follow the path to Rocket House. Through the gate following the sign to Knighton Hill. Would you know that river is just below you? 100m after Thorn Cottage it is decision time. At the sign post you can either take footpath 25 to Knighton for the village shops and pub, or footpath 28 to church and beach via tracks and fields. Re-join the coastal footpath at St Werburgh's church. Descend to the beach and Old Mill Café (National Trust). Return along the coastal footpath to the mouth of the river. At Rocket House follow the sign "View of River Yealm" – and the best is saved to last! Finally descend the zigzag path to the steps at Warren Point.



The Yealm Yacht Club



**A warm welcome awaits
visiting yachtsmen**

- Waterfront bar and bistro
- Bar food, barbecues and fine dining
- Showers
- Free WiFi
- 10 mins. walk from the harbour

We are open every evening Tuesday to Saturday

Lunchtime at weekends and bank holidays

Closed Mondays

(except bank holidays when we will be open at lunchtime only)

“Always made welcome, a lovely club atmosphere.”

“Brilliant...friendly, excellent food, reasonable price and a great view!”

“An awesome setting. Had a wonderful meal here.”



Follow us on Facebook and Trip Advisor



Riverside Road East, Newton Ferrers, Devon PL8 1AE

Tel: 01752 872291 Bistro: 01752 872232

www.yealmyachtclub.co.uk / Email manager@yealmyachtclub.co.uk



The River Yealm Harbour

Weather Forecasts – Falmouth Coastguard

Full Maritime Safety Information broadcasts are at 0710 and 1910.
New Inshore Forecasts and Gale Warnings are at 0110 and 1310.
Repetition broadcasts are at 0410, 1010, 1610 and 2210.

Frequencies will be announced on Ch. 16 prior to each broadcast.

Weather information is also available at the Harbour Office.

Weather Forecasts – BBC Radio Devon

Local weather information is broadcast at 0625, 0725
and 1725 on 95.7Mhz and online.

Speed Limit 6 Knots
Beware of Swimmers

Voss – a causeway that
can be used by walkers to
cross the creeks at low tide.



Kitley

Kitley Estate

The Kitley Reach, which is the area above Thorn Pool, is part of a private estate and you are asked not to land or anchor in this area
Oyster beds are marked by small cardinal buoys.

Thorn Pool

Shortafilete Creek

Footpath

Newton Wood

Court Wood

To Yealmpton & Plymouth

Newton Hill:
Shop
Post Office
Chemist

NEWTON FERRERS

Delicatessen and Cafe

Holy Cross Church

Yealm Yacht Club

Dolphin Inn

Footpath to Newton Ferrers

Voss

Bridgend Quay
(Water & Electricity)

Newton Creek

Wide Slip
(Landing)

Visitor's Pontoon

Kilpatrick Steps
(Landing)

NOSS MAYO

Swan Inn

St. Peter's Church

Ship Inn

Voss

Reproduced from Admiralty Chart 30 by permission of the Controller of H.M. Stationery Office and the UK Hydrographic Office.
(www.ukho.gov.uk)

© RYHA 2024

The return of Bluefin Tuna



Atlantic Bluefin Tuna are amongst the largest, fastest and most valuable fish in the sea – in UK waters they grow to over 500 kg. Once a common sight, bluefin tuna, or ‘tunny’ as they used to be called, largely disappeared from UK waters in the 1960s, most likely as a result of overfishing and changes in the availability of their preferred prey. In recent years, the number of tuna sightings in UK waters has been increasing. In the summer and autumn, bluefin tuna can often be seen off our coastline feeding on the seasonally abundant stocks of prey such as mackerel and sardines. On rare occasions they have even been spotted within the Yealm estuary.

The increase in their numbers has led to a growing interest in the species from the scientific community, the recreational fishing community, and the commercial fishing sector. Bluefin tuna are a protected species, so it is illegal to catch one unless you have a licence. For 2023 the UK had a quota of 65 tonnes of bluefin tuna, and during 2022 and 2023 DEFRA (Department for Environment, Food and Rural Affairs) funded a catch-and-release tagging programme to help to research what is happening with tuna in our waters. Around 25 charter fishing boats have been licensed, so recreational anglers can pay for a trip with the aim of catching and releasing a tuna – with 2023 seeing 1383 fish caught and tagged.

Tuna move quickly, and are generally not as easy to spot as dolphins and porpoises. Your best chance of seeing them is when the sea is fairly calm. Look for splashes, and also for activity from seabirds, such as gulls, gannets and shearwaters – they follow hunting tuna looking to pick up fish pushed to the surface. You’ll often find tuna with dolphins and here you can easily tell the difference when they break the surface by the vertical orientation of the tuna’s tail. Sometimes when feeding they’ll leap right out of the water, and

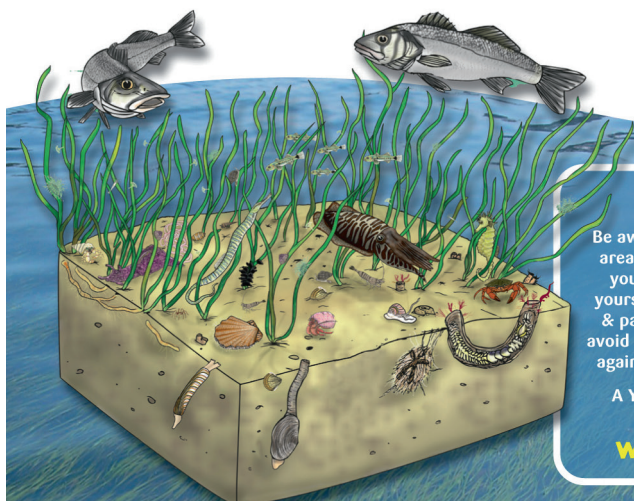
other times you’ll see what looks like a torpedo just breaking the water’s surface with baitfish leaping out of the water in front of the hunting tuna.

If you are out at sea looking for tuna and other wildlife, remember to keep a safe distance when dolphins and whales are around, and follow the advice regarding wildlife below.

Clive Woodyear

- Keep 100 metres away from the animals and don’t approach them head on or from directly behind. Never cut across, or go through the middle of a group of animals.
- Approach animals at less than 6 knots – at a gentle angle from the side, and wait for them to come to you.
- Even in a sailing vessel be careful to keep your distance and avoid collision, as without engine noise the animals have fewer clues as to your whereabouts.
- Avoid groups of mothers and young completely.
- Switch engines into neutral if animals actively come over to your boat.
- Don’t chase after animals if they move away, or encircle them with other boats.
- If dolphins bow ride alongside your vessel don’t increase your speed or change course suddenly.
- Don’t touch or feed marine animals.
- Limit your time with animals to around 15 minutes.
- If you see wildlife being disturbed contact the coastguard or the police wildlife crime officer on 101.
- If you find a sick, injured or entangled marine animal, please call British Divers Marine Life Rescue 01825 765546.

Yealm Estuary's Seagrass Jungles!



Playing your part

Be aware of where the seagrass grows and try to avoid these areas - avoid excessive propeller wash, anchoring, allowing your boat to ground or drag over the beds. If you do find yourself within seagrass, simply STOP - lift your engine clear & paddle out to deeper water. Paddlers should take care to avoid dragging their craft over exposed seagrass and 'punting' against the seabed or harsh paddling until clear of the beds.

A Yealm Estuary information leaflet is available from the Harbour Office or downloadable from our website:

www.SouthDevonAONB.org.uk

- Some of the UK's richest marine communities are found within Yealm Harbour
- Seagrasses help reduce the effects of global warming 35x more efficiently than rainforests
- They provide vital food and shelter for a diverse community of sea life and are an important nursery habitat for 3 out of 4 commercial fisheries species
- Seagrasses are flowering plants, with leaves and roots - not seaweeds at all
- Seagrasses benefit us all but are fragile and need our care ... globally, they are one of our fastest disappearing marine communities

Suffering a wasting disease, thought to be pollution related, the extent of seagrass in the UK is just 10% of that pre 1930's. Seagrass meadows are very vulnerable to boats anchoring and propeller scour, inappropriate moorings, dredging and destructive fishing methods - all leading to further seagrass loss and habitat fragmentation.



**A marine Site of
Special Scientific
Interest and Special
Area of Conservation**



**South Devon
National
Landscape**



**South Devon
Estuaries
Partnership**

Times and heights of high and low waters. Time Zone UT (GMT).

Add 1 hour for BST Between 31st March 2024 and 27th October 2024.

APRIL

1

Time m

0315 1.6

0942 4.4

M 1536 1.4

2204 4.4

16

Time m

0450 2.1

1055 3.9

TU 1717 2.4

2313 4.4

2

0409 1.9

1050 4.1

TU 1640 2.2

Ⓒ 2320 4.2

3

0546 2.1

1217 4.0

W 1837 2.3

4

0055 4.3

0740 2.0

TH 1402 4.2

2018 1.9

5

0231 4.6

0900 1.5

F 1520 4.6

2130 1.4

6

0338 5.0

1002 1.0

SA 1616 4.9

2227 0.9

7

0432 5.3

1055 0.5

SU 1705 5.2

2316 0.5

8

0521 5.6

1142 0.2

M 1750 5.4

●

9

0002 0.2

0608 5.7

TU 1226 0.0

1834 5.5

10

0044 0.1

0653 5.7

W 1306 0.1

1914 5.5

11

0124 0.2

0735 5.6

TH 1344 0.3

1951 5.4

12

0201 0.4

0813 5.3

F 1420 0.6

2024 5.2

13

0247 5.0

0847 5.8

SA 1454 1.1

2052 5.0

14

0313 1.2

0917 4.6

SU 1530 1.6

2121 4.7

15

0355 1.7

0952 4.2

M 1615 2.0

Ⓐ 2202 4.3

16

0450 2.1

1055 3.9

TU 1717 2.4

2313 4.4

17

0608 2.3

1311 3.8

W 1842 2.5

18

0131 4.1

0810 2.2

TH 1422 4.0

2033 2.2

19

0238 4.3

0915 1.8

F 1515 4.3

2131 1.8

20

0328 4.6

1000 1.4

SA 1559 4.6

2214 1.4

21

0411 4.8

1039 1.2

SU 1637 4.8

2253 1.2

22

0450 5.0

1114 1.0

M 1713 4.9

2328 1.0

23

0527 5.1

1146 0.9

TU 1749 5.0

○ 2359 5.0

24

0604 5.1

1216 0.9

W 1823 5.1

25

0028 0.9

0639 5.1

TH 1243 0.9

1855 5.1

26

0056 0.9

0712 5.0

F 1310 1.0

1924 5.1

27

0124 1.0

0742 4.9

SA 1337 1.1

1952 5.0

28

0153 1.1

0814 4.8

SU 1407 1.3

2024 4.9

29

0227 1.3

0851 4.6

M 1444 1.5

2104 4.7

30

0311 1.6

0940 4.4

TU 1532 1.8

2158 4.6

MAY

1

Time m

0412 1.8

1045 4.2

W 1643 2.1

Ⓒ 2309 4.4

16

Time m

0534 2.1

1213 2.9

TH 1759 2.3

2

0543 1.9

1207 4.1

TH 1822 2.1

3

0035 4.4

0717 1.7

F 1339 4.3

1951 1.8

4

0203 4.7

0832 1.4

SA 1450 4.6

2010 1.4

5

0309 5.0

0933 1.0

SU 1546 4.9

2158 1.0

6

0404 5.2

1026 0.6

M 1635 5.2

2249 0.7

7

0455 5.4

1114 0.4

TU 1722 5.4

2336 0.4

8

0543 5.5

1159 0.3

W 1806 5.4

●

9

0019 0.4

0629 5.4

TH 1241 0.4

1847 5.4

10

0100 0.4

0711 5.3

F 1320 0.6

1925 5.3

11

0140 0.7

0751 5.1

SA 1357 0.9

1958 5.2

12

0218 1.0

0826 4.8

SU 1434 1.2

2029 5.0

13

0257 1.3

0900 4.5

M 1513 1.6

2102 4.7

14

0339 1.7

0940 4.2

TU 1557 2.0

2145 4.5

15

0431 2.0

1038 4.0

W 1652 2.2

Ⓐ 2244 4.2

16

0534 2.1

1213 2.9

TH 1759 2.3

17

0020 4.2

0648 2.1

F 1327 4.0

1913 2.2

18

0141 4.3

0801 1.9

SA 1423 4.2

2022 2.0

19

0237 4.4

0858 1.7

SU 1510 4.5

2117 1.7

20

0325 4.6

0944 1.4

M 1554 4.7

2203 1.5

21

0410 4.8

1025 1.3

TU 1635 4.8

2244 1.3

22

0452 4.9

1104 1.1

W 1715 5.0

2322 1.1

23

0534 4.9

1140 1.1

TH 1753 5.1

○ 2359 1.0

24

0613 5.0

1216 1.0

F 1829 5.1

25

0034 1.0

0652 5.0

SA 1251 1.1

1905 5.1

26

0111 1.0

0729 4.9

SU 1327 1.2

1940 5.1

27

0149 1.1

0808 4.8

M 1405 1.3

2019 5.0

28

0231 1.2

0852 4.7

TU 1449 1.4

2104 4.9

29

0320 1.4

0943 4.5

W 1541 1.6

2156 4.8

30

0419 1.5

1042 4.4

TH 1644 1.8

Ⓐ 2259 4.7

31

0529 1.6

1152 4.4

F 1758 1.8

JUNE

1

Time m

0012 4.7

0644 1.5

SA 1306 4.5

1915 1.7

16

Time m

0015 4.3

0646 2.0

SU 1311 4.2

1912 2.1

2

0128 4.7

0755 1.4

SU 1413 4.6

2024 1.5

3

0235 4.9

0859 1.2

M 1512 4.8

2126 1.2

4

0335 5.0

0956 1.0

TU 1605 5.0

2221 1.0

5

0429 5.1

1048 0.9

W 1655 5.2

2312 0.8

6

0520 5.1

1136 0.8

TH 1741 5.2

● 2359 0.8

7

0608 5.1

1220 0.8

F 1824 5.3

8

0043 0.8

0653 5.0

SA 1302 0.9

1905 5.2

9

0125 0.9

0735 4.9

SU 1342 1.1

1941 5.1

10

0205 1.1

0814 4.7

M 1420 1.3

2014 5.0

11

0244 1.3

0850 4.6

TU 1458 1.5

2051 4.8

12

0324 1.5

0929 4.4

W 1537 1.7

2130 4.7

13

0406 1.7

1013 4.2

TH 1621 1.9

2216 4.5

14

0452 1.9

1106 4.2

F 1711 2.1

Ⓐ 2311 4.4

15

0546 2.0

1207 4.1

SA 1809 2.1

16

Time m

0015 4.3

0646 2.0

SU 1311 4.2

1912 2.1

17

0125 4.3

0747 1.9

M 1410 4.3

2013 1.9

18

0228 4.4

0844 1.7

TU 1505 4.5

2110 1.7

19

0326 4.5

0936 1.6

W 1555 4.7

2201 1.5

20

0418 4.7

1025 1.4

TH 1642 4.9

2249 1.3

21

0506 4.8

1111 1.2

F 1726 5.0

2335 1.1

22

0552 4.9

1156 1.1

SA 1809 5.1

○

23

0020 1.0

0637 4.9

SU 1240 1.1

1851 5.2

24

0105 0.9

0722 5.0

M 1324 1.0

1934 5.2

25

0150 0.9

0807 4.9

TU 1408 1.1

2018 5.2

26

0235 0.9

0853 4.9

W 1453 1.1

2103 5.2

27

0322 1.0

0941 4.8

TH 1540 1.2

2152 5.1

28

0411 1.1

1031 4.7

F 1630 1.4

Ⓒ 2244 4.9

29

0504 1.3

1127 4.6

SA 1727 1.5

2344 4.8

30

0605 1.5

1229 4.5

SU 1832 1.7

JULY

1

Time m

0051 4.7

0713 1.5

M 1334 4.5

1945 1.7

16

Time m

0007 4.2

0639 2.1

TU 1302 4.2

1916 2.1

2

0203 4.6

0824 1.5

TU 1440 4.6

2056 1.6

3

0310 4.6

0929 1.5

W 1540 4.8

2200 1.4

4

0411 4.7

1028 1.3

TH 1635 4.9

2257 1.2

5

0505 4.8

1121 1.2

F 1724 5.1

● 2347 1.1

6

0555 4.9

1208 1.1

SA 1809 5.1

Ⓒ

7

0033 1.0

0640 4.9

SU 1251 1.1

1850 5.2

8

0115 1.0

0721 4.9

M 1331 1.1

1927 5.1

9

0154 1.0

0759 4.8

TU 1407 1.2

2002 5.1

10

0229 1.1

0833 4.7

W 1439 1.3

2035 5.0

11

0301 1.3

0906 4.6

TH 1510 1.5

2109 4.8

12

0331 1.5

0941 4.5

F 1541 1.7

2145 4.7

13

0402 1.7

1020 4.4

SA 1615 1.8

Ⓒ 2224 4.5

14

0439 1.8

1104 4.3

SU 1659 2.0

2309 4.4

15

0530 2.0

1157 4.2

M 1801 2.2

16

0007 4.2

0639 2.1

TU 1302 4.2

1916 2.1

17

0121 4.2

0751 2.0

W 1413 4.3

2025 2.0

18

0241 4.4

0856 1.8

TH 1518 4.5

2128 1.7

19

0348 4.5

0955 1.6

F 1614 4.8

2226 1.4

20

0444 4.7

1051 1.3

SA 1705 5.0

2320 1.1

21

0536 4.9

1143 1.1

SU 1752 5.2

○

22

0010 0.9

0625 5.0

M 1232 0.9

1839 5.4

23

0058 0.7

0713 5.1

TU 1318 0.8

1925 5.5

24

0144 0.6

0759 5.2

W 1402 0.7

2011 5.5

25

0228 0.5

0844 5.2

TH 1444 0.7

2055 5.4

26

0309 0.6

0926 5.1

F 1525 0.9

2138 5.3

27

0351 0.9

1009 4.9

M 1607 1.1

2222 5.0

28

0434 1.2

1055 4.7

SA 1653 1.4

Ⓒ 2311 4.7

29

0524 1.5

1150 4.5

M 1751 1.8

30

0014 4.5

0629 1.8

TU 1259 4.4

1907 2.0

31

0137 4.3

0752 2.0

W 1416 4.4

2038 2.0

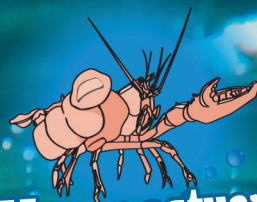
Times and heights of high and low waters. Time Zone UT (GMT).
Add 1 hour for BST Between 31st March 2024 and 27th October 2024.

AUGUST				SEPTEMBER				OCTOBER				NOVEMBER			
Time	m	Time	m	Time	m	Time	m	Time	m	Time	m	Time	m	Time	m
1	0256 4.3	16	0204 4.2	1	0445 4.7	16	0411 4.8	1	0457 5.0	16	0435 5.3	1	0530 5.2	16	0539 5.6
TH 1525 4.5		F 1448 4.5		SU 1100 1.3		M 1626 5.3		TU 1112 1.1		W 1045 0.8		F 1743 5.2	SA 1801 5.6		
2154 1.7		2106 1.8		2324 1.1		2248 0.8		2333 0.9		2310 0.5		● 2357 1.1			
2	0402 4.5	17	0328 4.4	2	0525 4.9	17	0500 5.2	2	0530 5.1	17	0520 5.5	2	0604 5.3	17	0014 0.6
1021 1.6		0936 1.7		1141 1.1		1111 0.8		1147 0.9		1132 0.5		1212 1.1	17	0624 5.6	
F 1623 4.8		SA 1553 4.8		M 1734 5.2		TU 1714 5.6		● 1740 5.3		TH 1737 5.8		SA 1818 5.2	SU	1237 0.6	
2252 1.4		2210 1.4		2336 0.4				○ 2356 0.3						1847 5.5	
3	0457 4.6	18	0428 4.7	3	0003 0.9	18	0546 5.4	3	0005 0.8	18	0604 5.6	3	0024 1.1	18	0056 0.8
1113 1.3		1036 1.3		0601 5.0		1158 0.5		0603 5.2		1216 0.3		0637 5.2	SU	0706 5.5	
SA 1712 5.0		SU 1646 5.1		TU 1217 0.9		W 1801 5.7		TH 1218 0.9		F 1823 5.8		SU 1239 1.2	M 1319 0.8	SU	1319 0.8
2340 1.1		2306 1.0		● 1809 5.3		○		1813 5.3				1851 5.1		2052 4.7	
4	0543 4.8	19	0520 5.0	4	0038 0.8	19	0021 0.2	4	0034 0.9	19	0037 0.3	4	0049 1.2	19	0136 1.0
1159 1.1		1130 1.0		0634 5.1		0632 5.5		0634 5.2		0647 5.7		0707 5.2	SU	0745 5.4	
SU 1754 5.1		M 1735 5.4		W 1250 0.8		TH 1241 0.3		F 1245 0.9		SA 1258 0.4		M 1306 1.2	TU	1400 1.1	
●		○ 2357 0.6		1842 5.3		1847 5.8		1845 5.3		1907 5.7		1922 5.0		2012 5.0	
5	0023 1.0	20	0608 5.2	5	0108 0.8	20	0104 0.1	5	0058 1.0	20	0117 0.4	5	0115 1.3	20	0215 1.3
0625 4.9		1219 0.6		0705 5.1		0715 5.6		0704 5.2		0728 5.6		TU 1333 1.4	W	1442 1.4	
M 1239 1.0		TU 1823 5.6		TH 1318 0.9		F 1322 0.2		SA 1308 1.1		SU 1337 0.5		1952 4.9		2052 4.7	
1833 5.2				1913 5.3		1931 5.8		1916 5.2		1948 5.5					
6	0102 0.9	21	0044 0.4	6	0133 0.9	21	0143 0.2	6	0118 1.1	21	0155 0.8	6	0143 1.5	21	0256 1.7
0701 4.9		0656 5.3		0735 5.1		0755 5.5		0733 5.1		0805 5.4		0806 5.0	SU	0901 4.9	
TU 1315 1.0		W 1303 0.4		F 1341 1.0		SA 1401 0.4		SU 1329 1.2		M 1416 0.9		W 1405 1.5	TH	1527 1.7	
1908 5.2		1909 5.7		1944 5.2		2011 5.6		1944 5.1		2026 5.1		2027 4.7		2134 4.4	
7	0136 0.9	22	0128 0.2	7	0153 1.1	22	0221 0.5	7	0138 1.3	22	0232 1.2	7	0216 1.7	22	0341 2.0
0735 4.9		0740 5.4		0804 5.0		0833 5.4		0759 5.0		0840 5.1		0844 4.8		0945 4.7	
W 1346 1.0		TH 1345 0.4		SA 1401 1.2		SU 1438 0.7		M 1351 1.3		TU 1455 1.3		TH 1444 1.8	F	1617 2.0	
1940 5.2		1954 5.7		2012 5.0		2049 5.3		2010 4.9		2103 4.8		2111 4.5		2229 4.2	
8	0205 1.0	23	0209 0.3	8	0211 1.2	23	0256 0.9	8	0200 1.4	23	0310 1.7	8	0258 1.9	23	0434 2.3
0806 4.9		0822 5.4		0831 4.9		0908 5.1		0824 4.9		0915 4.8		0934 4.7		1044 4.5	
TH 1413 1.1		F 1425 0.4		SU 1420 1.4		M 1515 1.2		TU 1416 1.5		W 1538 1.8		F 1537 2.0	SA	1718 2.2	
2012 5.1		2035 5.6		2037 4.9		2125 4.9		2037 4.7		2142 4.4		2210 4.3	⌘	2351 4.1	
9	0230 1.1	24	0247 0.5	9	0231 1.4	24	0333 1.5	9	0228 1.7	24	0356 2.1	9	0359 2.2	24	0540 2.4
0836 4.8		0902 5.3		0856 4.7		0943 4.8		0855 4.7		0959 4.5		1038 4.5		1207 4.4	
F 1437 1.3		SA 1503 0.7		M 1443 1.6		TU 1556 1.7		W 1449 1.8		TH 1635 2.2		SA 1659 2.2	SU	1830 2.3	
2042 5.0		2115 5.4		2102 4.7		⌘ 2202 4.4		2117 4.5		⌘ 2250 4.0		⌘ 2323 4.2			
10	0251 1.3	25	0324 0.8	10	0257 1.6	25	0417 2.0	10	0305 2.0	25	0459 2.5	10	0535 2.3	25	0105 4.2
0906 4.7		0940 5.1		0924 4.5		1027 4.4		0945 4.5		1126 4.2		SU 1836 2.0	M	1321 4.4	
SA 1458 1.5		SU 1540 1.0		TU 1514 1.8		W 1652 2.2		TH 1536 2.1		F 1756 2.4				1944 2.1	
2111 4.8		2154 5.0		2136 4.4		2305 4.0		⌘ 2218 4.2							
11	0312 1.5	26	0402 1.3	11	0332 1.9	26	0521 2.4	11	0400 2.3	26	0051 3.9	11	0050 4.3	26	0204 4.3
0936 4.6		1019 4.8		1009 4.3		1203 4.1		1054 4.3		0636 2.6		0712 2.1	26	0807 2.2	
SU 1522 1.7		M 1622 1.5		W 1559 2.1		TH 1820 2.5		F 1703 2.4		SA 1314 4.3		M 1320 4.7	TU	1418 4.5	
2140 4.6		⌘ 2235 4.6		⌘ 2236 4.2				2338 4.1		1951 2.3		1955 1.7		2041 1.9	
12	0338 1.7	27	0447 1.7	12	0425 2.2	27	0118 3.9	12	0557 2.5	27	0205 4.1	12	0212 4.6	27	0253 4.5
1010 4.4		1108 4.4		1119 4.2		0723 2.6		1219 4.3		0817 2.3		TU 1433 5.0	W	1507 4.7	
M 1555 1.9		TU 1716 2.0		TH 1720 2.4		F 1347 4.2		SA 1907 2.2		SU 1421 4.5		2058 1.3		2128 1.7	
⌘ 2217 4.4		2338 4.2		2356 4.0		2033 2.2				2053 1.9					
13	0416 1.9	28	0549 2.2	13	0622 2.4	28	0239 4.1	13	0120 4.2	28	0300 4.4	13	0313 4.9	28	0337 4.8
1055 4.2		1229 4.2		1247 4.2		0900 2.2		0746 2.2		0912 1.9		0925 1.3		0948 1.7	
TU 1644 2.1		W 1838 2.3		F 1929 2.3		SA 1457 4.5		SU 1356 4.6		M 1512 4.7		W 1531 5.3	TH	1552 4.9	
2311 4.2				2132 1.8		2132 1.8		2027 1.8		2139 1.6		2153 1.0		2209 1.5	
14	0516 2.2	29	0125 4.0	14	0140 4.1	29	0337 4.4	14	0249 4.6	29	0343 4.7	14	0405 5.2	29	0419 5.0
1201 4.2		0732 2.3		0808 2.2		0951 1.8		0857 1.7		0956 1.6		1018 1.0		1029 1.5	
W 1814 2.3		TH 1402 4.2		SA 1424 4.5		SU 1548 4.8		M 1507 5.0		TU 1554 4.9		TH 1624 5.5	F	1635 5.0	
		2040 2.2		2049 1.8		2217 1.4		2129 1.2		2218 1.3		2243 0.7		2247 1.4	
15	0027 4.1	30	0251 4.1	15	0313 4.5	30	0421 4.7	15	0346 4.9	30	0421 4.9	15	0453 5.4	30	0459 5.1
0703 2.3		0915 2.1		0920 1.7		1034 1.4		0955 1.2		1035 1.3		1107 0.7		1107 1.4	
TH 1324 4.2		F 1515 4.5		SU 1533 4.9		M 1630 5.0		TU 1601 5.3		W 1632 5.1		F 1713 5.6	SA	1716 5.0	
1952 2.2		2151 1.8		2153 1.3		2256 1.1		2222 0.8		2254 1.1		○ 2330 0.6		2322 1.3	
31	0356 4.4							31	0456 5.1						
	1014 1.7								1110 1.1						
	SA 1611 4.8								TH 1708 5.2						
	2241 1.4								2327 1.1						

Your Estuary Needs You!

While you may have a small impact on our planet ... there are a lot of us!

Here are some simple things that will make a massive difference when we all try.



Your estuary needs you!

Avoid saltmarshes where possible - paddlers should take care when launching over or from sensitive shores

Only ever the 4p's down the Loo - Pee, Poo, Puke & Paper

Keep wake to a minimum ... on the slow side!

Reduce > Refuse > Reuse > Recycle

Be aware of sensitive shore and seabed communities - these are our carbon sinks - cross, paddle, motor and anchor carefully

Anti-foul may be a necessary evil but make sure it's in a tin, on your hull or being disposed of appropriately

Dog parents - dispose of all dog poo appropriately - in the sea it can pose a risk to bathers and water quality

Cigarette butts are plastic & toxic to aquatic life - Bin the Butt!

Leave nothing but ripples and footprints - take only photos & good memories

Prevent Fat-Bergs - reduce Food, Fats, Oils or Grease down the sink

Only Rain Down road Drains, they lead to natural water courses

Litter matters - collect your 5-a-day

Be part of the BioSecurity solution "CHECK - CLEAN - DRY"

Be wildlife disturbance sensitive - give it space & respect, it may be the law

Every fuel/oil drop counts - refuel / top up with care

Fit a holding tank and use local pump-out facilities - if you must pump-out, only pump out on the ebbing tide or out to sea

This is a soft water region - dose detergent for 'soft water'



THE DOLPHIN INN

Newton Ferrers

A TRADITIONAL PUB WITH
EXTRAORDINARY VIEWS

STUNNING HOME COOKED FOOD MADE WITH
LOCALLY SOURCED INGREDIENTS, GOOD WINE,
REAL ALES AND A RELAXING ATMOSPHERE.

Landlord Jonathan Rhead and Team Dolly
look forward to welcoming you

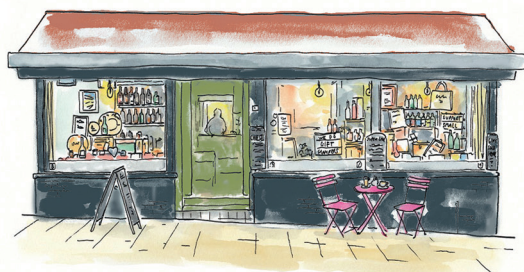
Children and dogs welcome



To find out more please find us on
Facebook or follow us on Instagram

1, Riverside Road East, Newton Ferrers
tel: 01752 872007

the
green



Delicatessen & Cafe

Fresh bread & bakery | Local produce

Great coffee | Wines & beers

Breakfast & lunch to eat-in or takeaway

Parsonage Road (just up from the church)
Newton Ferrers
e: info@thegreendeli.co.uk
w: thegreendeli.co.uk | t: 01752 872313

Opening hours

Tues to Sat: 8.30am - 4pm
Sun: 10am - 3pm
Mon: Closed

Emergency

Police, ambulance, coastguard, fire	999
Police Non-emergency	101
NHS Direct	111
Derriford Hospital	01752 202082
Yealm Medical GP Surgery	01752 880567
Yealmpton Dental Practice	01752 881348
Dental Practice out of hours	07719015290
Falmouth Coastguard	01326 317575
HMRC Customs	0845 0109000
Environment Agency	0370 8506506
Smuggling/suspicious activity	0800 595000
British Divers Marine Life Rescue	01825 765546
RSPCA	0300 1234 999
Tubbs Pharmacy	01752 872280
Newton Ferrers PO & Shop	01752 872285
Tower Taxi Cabs	01752 252525
Ivybridge Taxis	01752 892222
Yealm Yacht Club Bar	01752 872291
Yealm Yacht Club Bistro	01752 872232
The Ship Inn	01752 872387
The Dolphin Inn	01752 872007
The Swan Inn	01752 873115
Delicatessen on the Green	01752 872313

**LOCAL BUS TIMETABLE - (Tally Ho Bus No.94)****Plymouth – Newton Ferrers and Noss Mayo****Monday to Saturday (Except Public Holidays)**

Plymouth, Royal Parade stand A11	0840	1310	1740	
Plymstock, Lidl	0852	1322	1752	
Billacombe, Fairway	0854	1324	1754	
Elburton, Hotel	0858	1328	1758	
Brixton, Post Office	0902	1332	1802	
Yealmpton, Post Office	0906	1336	1806	
Holbeton, Post Office	0917			
Membland	0929			
Newton Ferrers, Green		1347	1817	
Newton Ferrers, Yealm Hotel		1352	1822	
Newton Ferrers, Co-Op		1355	1825	
Noss Mayo, Tennis Courts	0935	1403	1833	
Noss Mayo, Tennis Courts	0740	0935	1405	1835
Newton Ferrers, Court Rd.	0747	0942		1842
Newton Ferrers, Yealm Hotel	0752	0947		1847
Newton Ferrers, Co-Op	0755	0950		1850
Membland			1412	
Holbeton, Mildmay Colours Pub			1423	
Yealmpton, Volunteer Inn			1434	1904
Brixton, Elliots Hill	0809	1004		
Elburton, Hotel	0813	1008		
Billacombe, Fairway	0818	1013		
Plymstock, Co-Op	0821	1016		
Plymouth, Royal Parade stand A11		1020		
	0834	1032	1502	



Luscombe Maye

Since 1873

it's Plain Sailing from here on out

Residential & Waterside Properties

Professional Valuations/Probate

Trust & Planning

Farms & Land

Lettings

Scan Here
to arrange a
no-obligation
valuation of
your home



Discover how Luscombe Maye can help you navigate the property market.
Visit **luscombemaye.com** or call us on **01752 872417**

Partnering People and Property for over 150 years



Landlord Simon and his friendly crew welcome you to The Ship Inn.



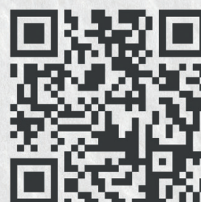
Stunning views from our beer garden situated on the water's edge that's second to none.



*Pub classics
Fresh fish
Daily seafood
Fine local ale
Dog Friendly*

The Ship Inn, Noss Mayo, South
Devon, PL8 1EW
Open daily 11:00 - 23:00
Food served daily 12:00 - 21:00

Book via our website:
theshipinn-nossmayo.co.uk
01752 872387
ShipNossMayo@youngs.co.uk



Follow us:    *The Ship Inn, Noss Mayo*

Book Now